

Jason B. West,<sup>1,†</sup> Ph.D.; Janet M. Hurley,<sup>1</sup> M.S.; Francis Ö. Dudás,<sup>2</sup> Ph.D.;  
and James R. Ehleringer,<sup>1</sup> Ph.D.

## The Stable Isotope Ratios of Marijuana. II. Strontium Isotopes Relate to Geographic Origin

**ABSTRACT:** Effectively addressing marijuana trade is aided by understanding marijuana geographic sources. We analyzed the  $^{87}\text{Sr}/^{86}\text{Sr}$  of marijuana samples grown in 79 counties across the United States to determine if a primary geologic signal is retained in marijuana, which could therefore be useful for geographic sourcing. The marijuana results were compared with modeled bedrock  $^{87}\text{Sr}/^{86}\text{Sr}$  values based on  $^{87}\text{Rb}$  decay rates and a generalized geologic map of the U.S.A. A significant correlation was observed between marijuana  $^{87}\text{Sr}/^{86}\text{Sr}$  and modeled bedrock  $^{87}\text{Sr}/^{86}\text{Sr}$ . Although values clustered near the 1:1 relationship, there was a predominance of positive anomalies, perhaps attributable to carbonate bedrock. A small number of negative anomalies were also observed, which were generally associated with granitic bedrocks. These results suggest that strontium isotopes in marijuana record the geographic origins of marijuana, and that refinement of the base strontium map (or strontium isoscape) and improved understanding of other strontium sources would be productive.

**KEYWORDS:** forensic science, stable isotope ratio, heavy isotopes, drug intelligence, *Cannabis sativa*, thermal ionization mass spectrometry, sourcing

In order to determine if a primary geologic signal is retained in marijuana strontium isotope ratios that would allow strontium to be used for geographic sourcing, we analyzed the  $^{87}\text{Sr}/^{86}\text{Sr}$  of marijuana samples grown in 79 different counties across the United States using thermal ionization mass spectrometry (TIMS). These results were compared with modeled bedrock  $^{87}\text{Sr}/^{86}\text{Sr}$  values based on rubidium decay rates and a generalized geologic map provided by the United States Geological Survey (USGS).

Marijuana (*Cannabis sativa* L.) is the most widely used illicit drug in the United States (1–4) and is associated with a range of public health concerns (5–12). Effectively addressing illicit trade in marijuana is aided by an understanding of its cultivation practices and distribution routes, thereby contributing to useful forensic drug intelligence (13). However, the current understanding of geographic sources and movements of marijuana remains relatively poor. Stable isotope ratios, chemical compositions, and genetic approaches have all been applied to the identification of geographic sources and cultivation methods of marijuana (14–23). Because stable isotope ratios of plant tissues can “record” aspects of a plant’s growth environment (24), stable isotopes have a unique potential to yield information on geographic origin and cultivation of seized samples that other methods would not yield. Previous work has shown the potential utility of light stable isotope ratios in this area (19–21,25–27). The specific application of carbon and nitrogen isotope

ratios to marijuana cultivation practices are discussed elsewhere (28).

In addition to the potential geographic signals that can be detected in the light stable isotope ratios of marijuana, spatial variation in the heavy isotopes has a clear potential to provide independent geographic, soil-based source information. Variation in the Sr isotope ratios of biological materials ( $^{87}\text{Sr}/^{86}\text{Sr}$ ) has been explored for a variety of archaeological and other applications for understanding geographic sources or movement of materials (29–34). However, it has not been explored for applications related to the geographic sourcing of marijuana.

Strontium isotope ratios vary spatially, with this variation largely dependent on soil mineralogy (specifically the time since crystallization and Rb content); however, atmospheric deposition, complex soil-forming processes, and fertilizer inputs all have the potential to obscure the expected geographic signal (31,35). An important evaluation of the potential utility of strontium isotopes for geographic sourcing of marijuana is to evaluate the observed variation in marijuana strontium isotopes across a wide range of bedrock ages to assess whether this fundamental geological “signal” is retained in marijuana tissues, or if other strontium inputs are large enough to mask the bedrock signal. It is important to note here that even if this geological signal is obscured by other sources, strontium isotope ratios could still be used to identify source regions. In these cases, it must be established that those source regions had different and consistent strontium isotope ratios, a significant investment of effort. A finding that the underlying bedrock imparts a signal to marijuana simplifies the interpretation of these measurements and will provide increased confidence in establishing *a priori* expectations prior to intensive sampling efforts. We report here the results of a survey of marijuana  $^{87}\text{Sr}/^{86}\text{Sr}$  from plants cultivated within the conterminous states of the U.S.A. These results were compared with a

<sup>1</sup>Department of Biology, University of Utah, 257 S 1400 E, Salt Lake City, UT 84112.

<sup>2</sup>Department of Earth, Atmospheric and Planetary Sciences, Massachusetts Institute of Technology, 77 Massachusetts Avenue, Cambridge, MA 02139.

†Current address: Texas AgriLife Research, Department of Ecosystem Science & Management, Texas A&M University, 1619 Garner Field Road, Uvalde, TX 78801.

Received 28 May 2008; and in revised form 25 Nov. 2008; accepted 29 Nov. 2008.

simplified strontium isoscape (modeled spatial distribution of bedrock  $^{87}\text{Sr}/^{86}\text{Sr}$  based on bedrock age; [36]) and the implications for forensic applications are discussed.

Strontium is chemically similar to calcium (similar charge and ionic radius) and substitutes for Ca in physical and biological systems. Sr has been utilized to understand such processes as rock weathering and Ca dynamics in plant–soil systems (e.g., 31,38,39).  $^{87}\text{Sr}$  is radiogenic, forming as a beta decay product of  $^{87}\text{Rb}$ .  $^{87}\text{Rb}$  has a long half-life of  $4.88 \times 10^{10}$  years (39), resulting in a wide range of abundances of  $^{87}\text{Sr}$  in Earth's minerals. All other stable isotopes of strontium are nonradiogenic ( $^{88}\text{Sr}$ ,  $^{86}\text{Sr}$ , and  $^{84}\text{Sr}$ ) and because the abundance of  $^{86}\text{Sr}$  is similar to that of  $^{87}\text{Sr}$ , the stable strontium isotope ratios of materials are reported as  $(^{87}\text{Sr}/^{86}\text{Sr})_{\text{measured}}$ , or often with reference to a “bulk earth”  $(^{87}\text{Sr}/^{86}\text{Sr})_{\text{bulk earth}}$  value of 0.7045 as  $\epsilon^{87}\text{Sr}$ :

$$\epsilon^{87}\text{Sr} = \left( \frac{(^{87}\text{Sr}/^{86}\text{Sr})_{\text{measured}}}{(^{87}\text{Sr}/^{86}\text{Sr})_{\text{bulk earth}}} - 1 \right) * 10000 \quad (1)$$

Based on the ratio of Rb to Sr, the initial  $^{87}\text{Sr}/^{86}\text{Sr}$  of the rock, and time since crystallization, the modern strontium isotope ratio of any rock sample can be described by the following equation:

$$\left( \frac{^{87}\text{Sr}}{^{86}\text{Sr}} \right)_P = \left( \frac{^{87}\text{Sr}}{^{86}\text{Sr}} \right)_I + \left( \frac{^{87}\text{Rb}}{^{86}\text{Sr}} \right) (e^{\lambda t} - 1) \quad (2)$$

where the subscripts *P* and *I* refer to the sample at the present time and at some time in the geologic past respectively (e.g., the time of crystallization of volcanic rock; [36]), *t* refers to time

(years), and  $\lambda$  is the decay constant (per year;  $1.42 \times 10^{-11}$  for the above half-life; see also [40]). To a first approximation, then, bedrock  $^{87}\text{Sr}/^{86}\text{Sr}$  can be predicted from rock age and some estimate of Rb and Sr concentrations in the rock (36). There is not likely to be significant isotopic fractionation with uptake given the small relative mass difference between  $^{87}\text{Sr}$  and  $^{86}\text{Sr}$ , thus plant  $^{87}\text{Sr}/^{86}\text{Sr}$  should reflect the  $^{87}\text{Sr}/^{86}\text{Sr}$  of the “available” strontium in soils (41). This pool of strontium is potentially different from that of the bulk parent material due to atmospheric deposition, cycling of strontium by plants, weathering effects, and other events that transport materials across Earth's surface (30,37,42). The direction or degree of divergence, however, is not known at large scales, nor is the geographic patterning of any divergence. Large-scale surveys of plant strontium isotope ratios can elucidate first-order relationships and potential geographically based offsets from simple expectations.

We report here the results of a survey of  $^{87}\text{Sr}/^{86}\text{Sr}$  from marijuana samples known to have been cultivated in 79 different counties across the United States and selected specifically to maximize geologic variability within the limits of sample availability from the University of Mississippi Marijuana Potency Project. This is the first survey of its kind for marijuana and provides a first-order evaluation of the ability of strontium isotope ratios to record region-of-origin for seized marijuana specimens.

## Methods

We analyzed domestic, outdoor-grown marijuana samples for strontium isotope ratios ( $^{87}\text{Sr}/^{86}\text{Sr}$ ) by TIMS. We obtained 93

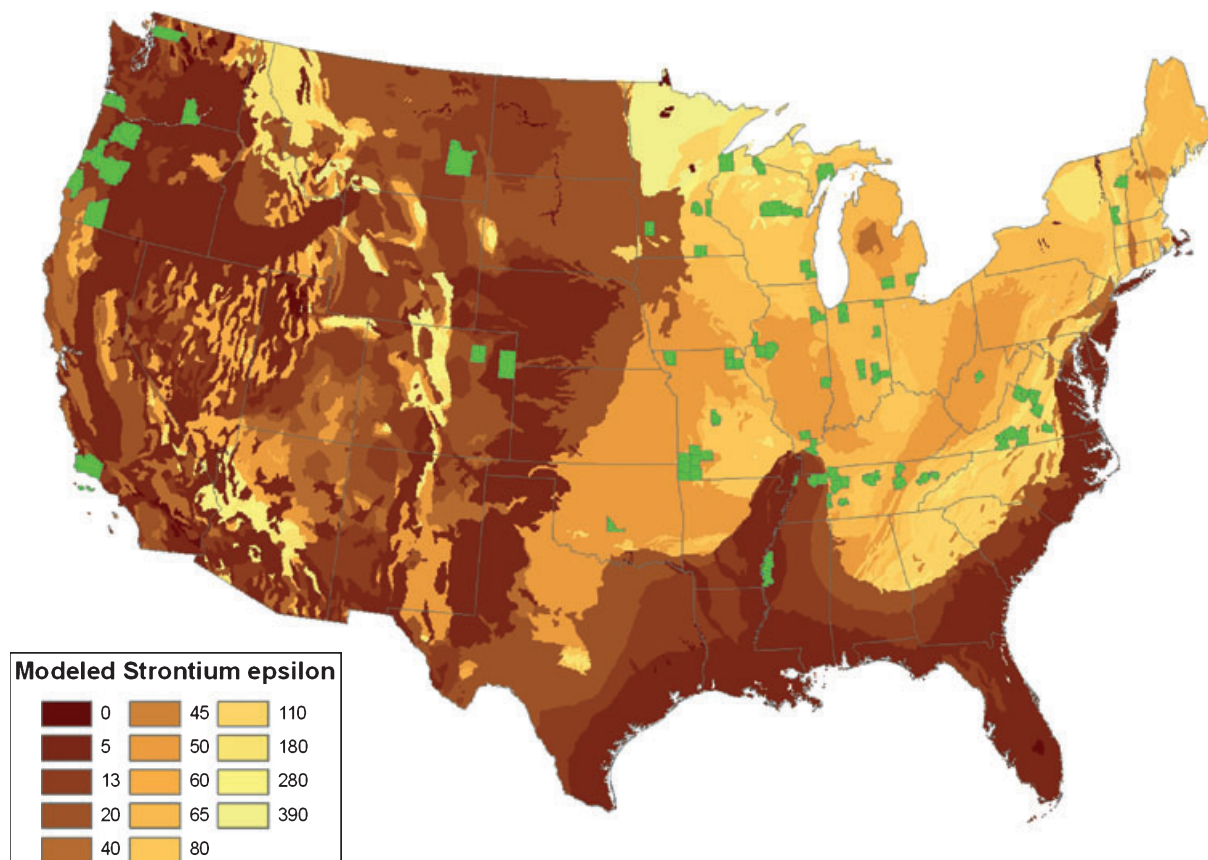


FIG. 1—Predicted strontium isotope variations (epsilon scale; see text for definition) of the conterminous United States based on a bedrock age model described by Beard and Johnson (36) and rock ages described by Vitoria et al. (42).

samples of known county origin that had been seized by the Drug Enforcement Administration (DEA) in 2003 and 2004. The samples were selected to represent a wide range of expected strontium isotope ratios (see Fig. 1). For samples from which leaf material could be isolated, we analyzed leaf-only fractions ( $n = 64$ ). Inflorescence fractions of five samples were also analyzed to allow comparisons with leaves. In cases where it was not possible to clearly distinguish leaf and inflorescence fractions, we analyzed a mixture of leaf and inflorescence material ( $n = 29$ ). We pulverized dried sample fractions with mortar and pestle, filtering residual large particles by passing ground material through 250  $\mu\text{m}$  stainless steel sieves. In preparation for TIMS, we placed 0.3 to 0.9 g of pulverized sample material into acid-washed quartz crucibles and dried the samples for 2 h at 80°C in a muffle furnace. The temperature in the muffle furnace was increased to 200°C for an additional 2 h, then to 600°C, allowing the samples to combust overnight.

Ashed samples were treated with 1 mL of 7 M nitric acid at 80°C, allowing reflux in the quartz crucibles for 1 h, to extract strontium from the ash material. The solution was transferred to 15 mL Teflon beakers and then evaporated. The residue was reacted with 1 mL of concentrated nitric acid at 80°C, and the acid was allowed to evaporate; this nitric acid step was repeated. The remaining solid was suspended in 0.25 mL concentrated nitric acid, then reacted with three aliquots of 0.1 mL 30% hydrogen peroxide at 80°C to eliminate all organics from the sample. After the samples were dried down, they were dissolved in 0.5 mL 3.5 M nitric acid. This solution was processed through 50  $\mu\text{L}$  cation exchange columns containing strontium exchange resin (Eichrom Sr-Spec; [43]). Purified samples were dried with a drop of 0.15 M  $\text{H}_3\text{PO}_4$ . Dried samples were resuspended in a mixed  $\text{TaCl}_5\text{-H}_3\text{PO}_4$  solution. Finally, samples were loaded on degassed rhenium (Re) filaments for analysis by TIMS (GV IsoProbe-T; IsotopX, Middlewich, Cheshire, U.K.) using a 3-cycle dynamic multicollection routine with a target intensity of 3 V  $^{88}\text{Sr}$ . Total procedure blanks were insignificant compared with sample sizes ( $>1 \mu\text{g Sr}$ ). All analyses were fractionation corrected to  $^{86}\text{Sr}/^{88}\text{Sr} = 0.1194$  and data were reported with respect to a  $^{87}\text{Sr}/^{86}\text{Sr}$  value of 0.710250 for the strontium carbonate isotopic standard (NIST SRM 987). During the period of these analyses, the measured  $^{87}\text{Sr}/^{86}\text{Sr}$  value of SRM 987 averaged to  $0.710240 \pm 0.000014$  ( $2\sigma$ ,  $n = 61$ ).

The measured marijuana  $\epsilon^{87}\text{Sr}$  values were compared with those expected from the bedrock ages based on data from the USGS Generalized Geologic Map of the United States (44). Using geographic information system (GIS) intersection tools, each map unit that fell within a given county was assigned a  $\epsilon^{87}\text{Sr}$  value based on equation 2 (36). One county in the database encompassed seven unique geologic units, but this was an extreme exception, as over half of the counties included no more than two total units and over 75% no more than three. For each county, the median  $\epsilon^{87}\text{Sr}$  value was taken as the mid-point between the maximum and minimum values based on the bedrock within the county. These median values were then compared with the measured marijuana  $\epsilon^{87}\text{Sr}$  values.

For two states, Oregon and Tennessee, published  $^{87}\text{Sr}/^{86}\text{Sr}$  soil and rock data were also compiled. Although, as with the Beard and Johnson model predictions (36), these data did not directly represent plant-available strontium, they did represent local measured values and allowed an additional first-order comparison for the marijuana strontium data.

## Results and Discussion

The strontium isotope ratios of the 93 marijuana samples ranged from 0.70410 to 0.71995 ( $\epsilon^{87}\text{Sr} = -6$  to 219), similar to the range

expected based on the ages of the underlying geology across the regions sampled (see Fig. 1). Two separate extractions and measurements of the same ground marijuana sample exhibited high precision ( $2\sigma = \pm 0.00001$  for each and differing by a value of  $<0.00001$ ). As expected, there was no significant difference between leaf and flower strontium isotope ratios based on a paired  $t$ -test ( $n = 5$ ,  $p = 0.9425$ ) and these were highly correlated ( $R = 0.998$ ;  $p < 0.005$ ) with an absolute mean difference of  $<0.00001$ .

Measured marijuana  $\epsilon^{87}\text{Sr}$  was significantly correlated with the county median expected  $\epsilon^{87}\text{Sr}$  from bedrock age ( $R = 0.49$ ,  $p < 0.001$ ,  $n = 93$ ; see Fig. 2). The average offset across counties from the median predicted value was +22, with some significantly larger values and some exceeding the maximum  $\epsilon^{87}\text{Sr}$  value expected from the bedrock found within the source county. The median range in within-county predicted  $\epsilon^{87}\text{Sr}$  was 20, although a few counties had high ranges reflecting their complex geologies (maximum range in expected  $\epsilon^{87}\text{Sr}$  values = 250; see Table 1). Four different samples from one county in Illinois with different seizure dates in 2004 had, at the scale of variation across the U.S.A., similar  $\epsilon^{87}\text{Sr}$  values, ranging from 71 to 88, suggesting that if accurate local strontium isotope ratios could be established, the strontium isotope ratios of plants grown in a given location would show high fidelity from year to year. It is important to note, however, that this range of variation is much larger than analytical uncertainty, suggesting either the presence of significant local spatial variation in source strontium isotope ratios, or perhaps seasonal differences in plant-available strontium isotope ratios.

Two primary conclusions can be drawn from these results. First, the strontium isotope ratios of marijuana recorded a local, geologically based signal. This observation is consistent with previous

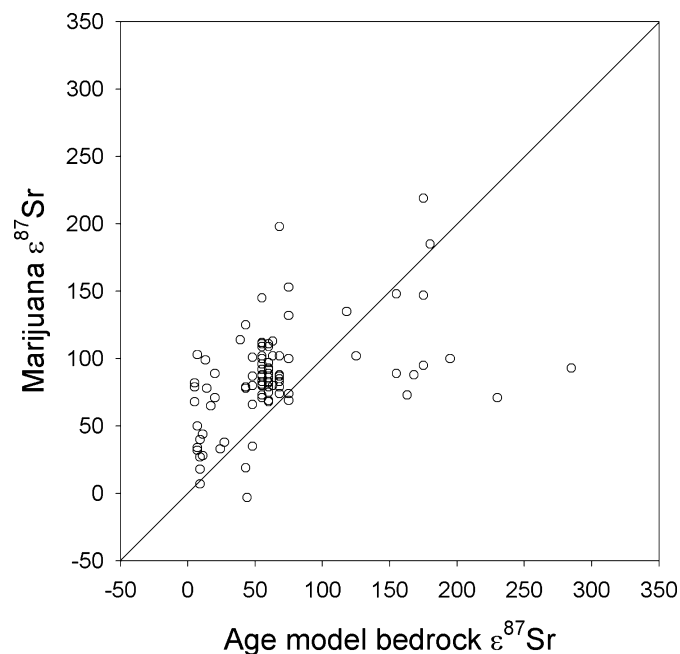


FIG. 2—Measured marijuana  $\epsilon^{87}\text{Sr}$  versus median modeled bedrock  $\epsilon^{87}\text{Sr}$  for the source counties. The diagonal line indicates the 1:1 relationship. All marijuana samples were obtained from leaves or a mixture of leaf and inflorescence material from known counties-of-origin. The spatial distribution included nearly the full range of expected variation in strontium isotope ratios in the conterminous U.S.A. Many of the data points with large positive excursions are from carbonate-rich regions, whereas many of those with large negative excursions are from granite-rich regions (see text for details).

TABLE 1—Complete list of measured marijuana strontium isotope ratios, and the predicted minimum and maximum bedrock  $\epsilon^{87}\text{Sr}$  values for the respective counties.

| County        | State | Marijuana<br>$^{87}\text{Sr}/^{86}\text{Sr}$ | Marijuana<br>Epsilon | Bedrock<br>Median | Bedrock<br>Minimum | Bedrock<br>Maximum |
|---------------|-------|--|----------------------|-------------------|--------------------|--------------------|
| Santa Barbara | CA    | 0.70681                                      | 33                   | 24                | 8                  | 40                 |
| Morgan        | CO    | 0.71077                                      | 89                   | 20                | 20                 | 20                 |
| Yuma          | CO    | 0.71001                                      | 78                   | 14                | 8                  | 20                 |
| Hawaii        | HI    | 0.70800                                      | 50                   | 7                 | 5                  | 8                  |
| Maui          | HI    | 0.70677                                      | 32                   | 7                 | 5                  | 8                  |
| Maui          | HI    | 0.70688                                      | 34                   | 7                 | 5                  | 8                  |
| Clark         | IL    | 0.71016                                      | 80                   | 48                | 45                 | 50                 |
| Fulton        | IL    | 0.71018                                      | 81                   | 55                | 45                 | 65                 |
| Fulton        | IL    | 0.71012                                      | 80                   | 55                | 45                 | 65                 |
| Fulton        | IL    | 0.70953                                      | 71                   | 55                | 45                 | 65                 |
| Fulton        | IL    | 0.70952                                      | 71                   | 55                | 45                 | 65                 |
| Fulton        | IL    | 0.71072                                      | 88                   | 55                | 45                 | 65                 |
| Henderson     | IL    | 0.70967                                      | 73                   | 55                | 45                 | 65                 |
| Massac        | IL    | 0.71009                                      | 79                   | 43                | 20                 | 65                 |
| McDonough     | IL    | 0.71065                                      | 87                   | 55                | 45                 | 65                 |
| Pope          | IL    | 0.71002                                      | 78                   | 43                | 20                 | 65                 |
| Will          | IL    | 0.71170                                      | 102                  | 63                | 45                 | 80                 |
| Williamson    | IL    | 0.71060                                      | 87                   | 48                | 45                 | 50                 |
| Decatur       | IN    | 0.71074                                      | 89                   | 60                | 55                 | 65                 |
| Franklin      | IN    | 0.71008                                      | 79                   | 68                | 55                 | 80                 |
| Johnson       | IN    | 0.70939                                      | 69                   | 60                | 55                 | 65                 |
| Laporte       | IN    | 0.71008                                      | 79                   | 60                | 55                 | 65                 |
| Marion        | IN    | 0.70975                                      | 75                   | 60                | 55                 | 65                 |
| Rush          | IN    | 0.70973                                      | 74                   | 68                | 55                 | 80                 |
| Starke        | IN    | 0.71027                                      | 82                   | 60                | 55                 | 65                 |
| Steuben       | IN    | 0.70936                                      | 69                   | 60                | 55                 | 65                 |
| Wells         | IN    | 0.71037                                      | 83                   | 60                | 55                 | 65                 |
| Delta         | MI    | 0.71171                                      | 102                  | 68                | 55                 | 80                 |
| Jackson       | MI    | 0.71038                                      | 83                   | 55                | 45                 | 65                 |
| Schoolcraft   | MI    | 0.71847                                      | 198                  | 68                | 55                 | 80                 |
| Wayne         | MI    | 0.70929                                      | 68                   | 60                | 55                 | 65                 |
| Freeborn      | MN    | 0.71033                                      | 83                   | 68                | 55                 | 80                 |
| Hennepin      | MN    | 0.70939                                      | 69                   | 75                | 70                 | 80                 |
| Lyon          | MN    | 0.70947                                      | 71                   | 20                | 20                 | 20                 |
| Washington    | MN    | 0.70969                                      | 74                   | 75                | 70                 | 80                 |
| Barry         | MO    | 0.71243                                      | 113                  | 63                | 45                 | 80                 |
| Dade          | MO    | 0.71155                                      | 100                  | 55                | 45                 | 65                 |
| Greene        | MO    | 0.71012                                      | 80                   | 63                | 45                 | 80                 |
| Jasper        | MO    | 0.71123                                      | 96                   | 55                | 45                 | 65                 |
| Knox          | MO    | 0.71167                                      | 102                  | 55                | 45                 | 65                 |
| Lawrence      | MO    | 0.71128                                      | 96                   | 55                | 45                 | 65                 |
| Lewis         | MO    | 0.71102                                      | 92                   | 60                | 55                 | 65                 |
| McDonald      | MO    | 0.71221                                      | 109                  | 55                | 45                 | 65                 |
| Morgan        | MO    | 0.71048                                      | 85                   | 68                | 55                 | 80                 |
| Newton        | MO    | 0.71242                                      | 112                  | 55                | 45                 | 65                 |
| Nodaway       | MO    | 0.70918                                      | 66                   | 48                | 45                 | 50                 |
| Scotland      | MO    | 0.71098                                      | 92                   | 55                | 45                 | 65                 |
| Bolivar       | MS    | 0.70931                                      | 68                   | 5                 | 5                  | 5                  |
| Washington    | MS    | 0.71005                                      | 79                   | 5                 | 5                  | 5                  |
| Custer        | MT    | 0.70906                                      | 65                   | 17                | 13                 | 20                 |
| McClain       | OK    | 0.71162                                      | 101                  | 48                | 45                 | 50                 |
| Benton        | OR    | 0.70496                                      | 7                    | 9                 | 5                  | 13                 |
| Clackamas     | OR    | 0.70643                                      | 27                   | 9                 | 5                  | 13                 |
| Clatsop       | OR    | 0.70763                                      | 44                   | 11                | 8                  | 13                 |
| Columbia      | OR    | 0.70651                                      | 28                   | 11                | 8                  | 13                 |
| Coos          | OR    | 0.70714                                      | 38                   | 27                | 13                 | 40                 |
| Jackson       | OR    | 0.70428                                      | -3                   | 44                | 8                  | 80                 |
| Lane          | OR    | 0.70732                                      | 40                   | 9                 | 5                  | 13                 |
| Marion        | OR    | 0.70576                                      | 18                   | 9                 | 5                  | 13                 |
| Cumberland    | TN    | 0.71473                                      | 145                  | 55                | 45                 | 65                 |
| Decatur       | TN    | 0.71328                                      | 125                  | 43                | 20                 | 65                 |
| Dickson       | TN    | 0.71135                                      | 97                   | 60                | 55                 | 65                 |
| Fentress      | TN    | 0.71235                                      | 111                  | 55                | 45                 | 65                 |
| Henry         | TN    | 0.71253                                      | 114                  | 39                | 13                 | 65                 |
| Houston       | TN    | 0.71054                                      | 86                   | 60                | 55                 | 65                 |
| Humphreys     | TN    | 0.71232                                      | 111                  | 60                | 55                 | 65                 |
| Jefferson     | TN    | 0.71379                                      | 132                  | 75                | 70                 | 80                 |
| Knox          | TN    | 0.71529                                      | 153                  | 75                | 70                 | 80                 |
| Lake          | TN    | 0.71025                                      | 82                   | 5                 | 5                  | 5                  |
| Lewis         | TN    | 0.71221                                      | 109                  | 60                | 55                 | 65                 |

TABLE 1—(Continued).

| County       | State | Marijuana<br><sup>87</sup> Sr/ <sup>86</sup> Sr | Marijuana<br>Epsilon | Bedrock<br>Median | Bedrock<br>Minimum | Bedrock<br>Maximum |
|--------------|-------|---|----------------------|-------------------|--------------------|--------------------|
| Smith        | TN    | 0.71073   | 88                   | 68                | 55                 | 80                 |
| Stewart      | TN    | 0.71106   | 93                   | 60                | 55                 | 65                 |
| Weakly       | TN    | 0.71146   | 99                   | 13                | 13                 | 13                 |
| Wilson       | TN    | 0.71156   | 100                  | 75                | 70                 | 80                 |
| Albemarle    | VA    | 0.71120   | 95                   | 175               | 70                 | 280                |
| Augusta      | VA    | 0.71403   | 135                  | 118               | 55                 | 180                |
| Buckingham   | VA    | 0.71492   | 148                  | 155               | 30                 | 280                |
| Floyd        | VA    | 0.71995   | 219                  | 175               | 70                 | 280                |
| Franklin     | VA    | 0.71487   | 147                  | 175               | 70                 | 280                |
| Lunenburg    | VA    | 0.70966   | 73                   | 163               | 45                 | 280                |
| Patrick      | VA    | 0.71155   | 100                  | 195               | 110                | 280                |
| Pittsylvania | VA    | 0.71080   | 89                   | 155               | 30                 | 280                |
| Bennington   | VT    | 0.71994   | 219                  | 175               | 70                 | 280                |
| Orange       | VT    | 0.71068   | 88                   | 168               | 55                 | 280                |
| Benton       | WA    | 0.71178   | 103                  | 7                 | 5                  | 8                  |
| Skagit       | WA    | 0.70582   | 19                   | 43                | 5                  | 80                 |
| Douglas      | WI    | 0.71753   | 185                  | 180               | 180                | 180                |
| Iron         | WI    | 0.71107   | 93                   | 285               | 180                | 390                |
| Marathon     | WI    | 0.70950   | 71                   | 230               | 180                | 280                |
| Racine       | WI    | 0.71072   | 88                   | 68                | 55                 | 80                 |
| Shawano      | WI    | 0.71170   | 102                  | 125               | 70                 | 180                |
| Waukesha     | WI    | 0.71064   | 87                   | 68                | 55                 | 80                 |
| Gilmer       | WV    | 0.70695   | 35                   | 48                | 45                 | 50                 |

These states were selected for their relatively large sample sizes and distinct distributions of measured <sup>87</sup>Sr/<sup>86</sup>Sr values. Sources for the published <sup>87</sup>Sr/<sup>86</sup>Sr values are listed in Appendix 1.

evidence that plant-available strontium should primarily reflect the dominant, underlying geology, with inputs from other sources having second-order effects (35), encouraging the further development of strontium isotopes as a tool for geographic sourcing of seized marijuana specimens. Not surprisingly, there remained considerable variation in the observed marijuana strontium isotope ratios that could not be explained based on simple correlations with predictions based on the underlying bedrock at the scale of individual counties. Approximately 80% of samples had measured values that fell outside the bounds of predicted  $\epsilon^{87}\text{Sr}$  for their county-of-origin. Most of these divergences were positive anomalies, suggesting either that the age-based bedrock model underpredicts true bedrock  $\epsilon^{87}\text{Sr}$  values, or that there was consistently a second, important strontium source in plant-available strontium that was more radiogenic than the underlying bedrock.

Although our survey did not include detailed analyses of the range of potential sources of strontium to plants in the 79 counties sampled, four classes of potential explanations may be established for our observations. These were (i) variations in the bedrock not explained by the bedrock age model, (ii) bulk soil strontium sources that differed from the underlying bedrock, (iii) internal cycling of strontium or other biological processes that resulted in the plant-available strontium isotope ratios differing from bulk soils, and (iv) significant inputs from outside sources such as atmospheric deposition or fertilizers.

Differential weathering of parent materials could result in divergence between bedrock strontium isotope ratios and that of the soils in which plants grow. Although clearly increases or decreases in soil <sup>87</sup>Sr/<sup>86</sup>Sr are possible with differential weathering, depending on rock mineral composition, for soils formed on carbonate bedrocks, soil strontium isotope ratios could be consistently higher than the underlying bedrock formations. This would occur through the preferential losses of carbonate materials, leaving soils disproportionately composed of more slowly weathering silicate materials with higher Rb/Sr and <sup>87</sup>Sr/<sup>86</sup>Sr ratios (e.g., [45]). It is possible that the large number of samples exhibiting positive offsets from

age-model expectations could be due to weathering of carbonate parent materials. Although not intentional, many of our samples were from regions with large carbonate deposits such as regions in the midwest and along the Appalachian mountain range (46,47). This could contribute to the generally positive offset observed in the dataset. It would be useful in future work to sample plants growing in regions such as North Dakota, northern Minnesota, or the coastal plains of Texas to evaluate whether those locations yielded better agreement between plant <sup>87</sup>Sr/<sup>86</sup>Sr values and the age model expectations. Of the 13 samples (Fig. 2) falling below

TABLE 2—Comparison with published <sup>87</sup>Sr/<sup>86</sup>Sr values for soils or rocks from within sample county-of-origin for Oregon and Tennessee for those sample counties with published data.

| County    | Measured<br>Marijuana<br><sup>87</sup> Sr/ <sup>86</sup> Sr | Minimum<br>Published<br><sup>87</sup> Sr/ <sup>86</sup> Sr | Maximum<br>Published<br><sup>87</sup> Sr/ <sup>86</sup> Sr | Geologic<br>Province | <i>n</i> |
|-----------|---|--|--|----------------------|----------|
| Oregon    |   |  |  |                      |          |
| Benton    | 0.70496   | 0.70300  | 0.71262  | Coast Range          | 27       |
| Clackamas | 0.70643*  | 0.70285  | 0.70617  | High Cascades        | 219      |
| Clatsop   | 0.70763   | 0.70300  | 0.71262  | Coast Range          | 27       |
| Columbia  | 0.70651   | 0.70300  | 0.71262  | Coast Range          | 27       |
| Coos      | 0.70714   | 0.70300  | 0.71262  | Coast Range          | 27       |
| Jackson   | 0.70428   | 0.70307  | 0.71760  | Klamath              | 76       |
|           |   | 0.70307  | 0.71760  | Klamath              | 76       |
|           |   | 0.70285  | 0.70617  | High Cascades        | 219      |
| Lane      | 0.70732   | 0.70300  | 0.71262  | Coast Range          | 27       |
|           |   | 0.70320  | 0.70390  | West Cascades        | 5        |
|           |   | 0.70285  | 0.70617  | High Cascades        | 219      |
| Marion    | 0.70576   | 0.70320  | 0.70390  | West Cascades        | 5        |
|           |   | 0.70285  | 0.70617  | High Cascades        | 219      |
| Tennessee |   |  |  |                      |          |
| Jefferson | 0.71379   | 0.70809  | 1.095  | Valley and Ridge     | 131      |
| Knox      | 0.71529   | 0.70809  | 1.095  | Valley and Ridge     | 131      |
| Smith     | 0.71073   | 0.70794  | 0.7109   | Central Basin        | 25       |
| Wilson    | 0.71156*  | 0.70794  | 0.7109   | Central Basin        | 6        |

\*Measured marijuana values outside the range of reported literature values.

the 1:1 line by greater than 10 epsilon units, 12 originated in counties from five states (OR, VA, VT, WA, and WI) identified as containing granitic rocks or gneiss. Our results therefore strongly suggest that plant-available strontium in soils on these formations is consistently nonradiogenic relative to expectations from the bedrock age model, and consistent with expectations based on weathering of less radiogenic components of these rocks (48).

In addition to the age-only bedrock model discussed here, Beard & Johnson (36) described a model for predicting mineral strontium isotope ratios that yielded strontium concentration-weighted estimates of  $\epsilon^{87}\text{Sr}$ . That model depended on measurements of the strontium concentration and isotope ratios of local soil and bedrock samples and accounted for the varying contributions of these materials to an expected concentration-weighted local pool. Unfortunately data on local strontium concentrations were not available for this study, thus the concentration-weighted model could not be

directly applied. However, if these concentration-weighted strontium isotope ratio values consistently yielded higher local means than did the simple median calculated here, this could explain part of the generally positive offsets observed in the marijuana  $\epsilon^{87}\text{Sr}$  values. We do not think this is likely because many rocks with high strontium isotope ratios also have low strontium concentrations, which will result in a decrease of the expected  $\epsilon^{87}\text{Sr}$  values of the underlying bedrock, an effect that will generally worsen the agreement between rock and plant  $\epsilon^{87}\text{Sr}$  in our dataset (35).

Several other potential sources of strontium to plants could explain variability in our dataset. If, as expected, many of these plants were receiving fertilizer addition (28), this would affect their strontium isotope ratios. Based on a recent survey of fertilizer isotope ratios, the  $^{87}\text{Sr}/^{86}\text{Sr}$  of fertilizers can range from 0.703 to a very radiogenic value of 0.835 from a KCl fertilizer that probably contained very high concentrations of Rb and therefore high

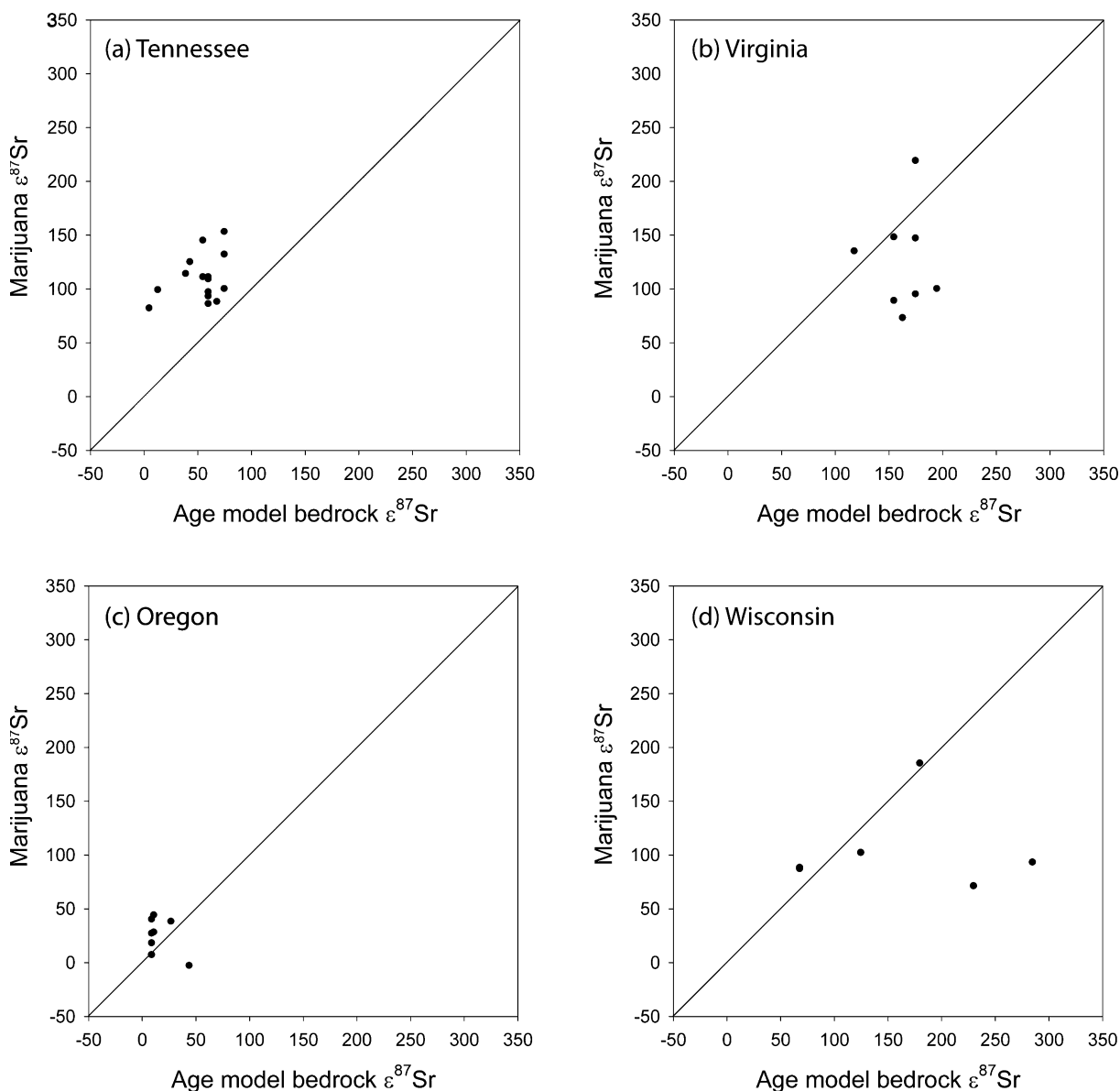


FIG. 3—Measured marijuana  $\epsilon^{87}\text{Sr}$  versus median modeled bedrock  $\epsilon^{87}\text{Sr}$  for the source county (see Fig. 1) for Tennessee (a), Virginia (b), Oregon (c), and Wisconsin (d). All marijuana samples were obtained from leaves or a mixture of leaf and inflorescence material from known counties-of-origin (leaves and inflorescences were not significantly different from each other). States are shown to represent the range of observed values and patterns with respect to bedrock, with the full dataset available in Table 1.

amounts of <sup>87</sup>Sr ( $\epsilon^{87}\text{Sr}$  of  $-21$  to  $1852$ ). Vitória et al. (42) pointed out that the fertilizers observed to have high <sup>87</sup>Sr/<sup>86</sup>Sr were those with high concentrations of potassium. More detailed work on strontium sources to marijuana growing in particular regions could yield interesting insights into not only the potential for strontium isotopes to geographically source plants, but also into the cultivation practices of growers. In addition, near-shore aerosols and particulates derived from the oceans could influence plant-available strontium (49). We did not see strong evidence of this in the samples collected in coastal counties. For example, although Benton and Coos counties in Oregon had values lower than the age model predicted and therefore could have had an oceanic influence, their values were also within the range of published literature values for the Coast Range (see Table 2). It is important to note that many counties cover a relatively large area and it is not known where within a given county the sample grew, making influences like ocean aerosols difficult to evaluate.

As with all applications of strontium isotope ratios to geographic source inferences, detailed understandings of the isotope ratios of plant-available Sr in potential source regions will yield the greatest power in identifying likely source regions for samples of unknown origin (e.g., [31, 36, 50]). At a national scale, it is clear from our results that many regions will be indistinguishable based on strontium isotope ratios without additional detailed information, even when the underlying bedrock is expected to differ significantly. However, in other cases where the expected bedrock  $\epsilon^{87}\text{Sr}$  values differ by relatively large amounts (e.g., samples grown in Oregon to those grown in Virginia or Wisconsin where observed differences are larger than  $c. 50$  epsilon units; see [Fig. 3]), it may not be unreasonable to utilize strontium isotope ratios alone to address specific questions such as whether a particular specimen originated in one of two locations.

We concluded that although considerable unexplained variability remained, marijuana strontium isotope ratios did retain a primary geologic signal based on bedrock age. These results suggest that strontium isotopes in marijuana have significant promise for application to geographic sourcing. The utility to specific forensic questions will be improved through finer-scale sampling of plants and soils, thus establishing local signatures prior to an application to unknowns. Also, common origins could be inferred from similar strontium isotope ratios, even lacking additional local information, if the range of possible origins could be constrained such that a unique isotope ratio would be expected for a given location.

#### Acknowledgments

Mahmoud ElSohly and Zlatko Mehmedic at the University of Mississippi provided the marijuana samples (by the Marijuana Potency Project) and collection information. June Sivilli and Mike Cala (ONDCP) provided important feedback and logistical assistance throughout the project. The Counterdrug Technology Assessment Center (CTAC) in the Office of National Drug Control Policy (ONDCP) provided financial support (contract no. HHSP23320046100ZC).

#### References

- Compton WM, Grant BF, Colliver JD, Glantz MD, Stinson FS. Prevalence of marijuana use disorders in the United States: 1991–1992 and 2001–2002. *J Am Med Assoc* 2004;291(17):2114–21.
- Stinson FS, Grant BF, Dawson DA, Ruan WJ, Huang B, Saha T. Comorbidity between DSM-IV alcohol and specific drug use disorders in the United States: results from the National Epidemiologic Survey on alcohol and related conditions. *Drug Alcohol Depend* 2005;80(1):105–16.
- Stinson FS, Ruan WJ, Pickering R, Grant BF. Cannabis use disorders in the USA: prevalence, correlates and co-morbidity. *Psychol Med* 2006;36(10):1447–60.
- Substance Abuse and Mental Health Services Administration. Results from the 2003 National Survey on Drug Use and Health: National Findings (Office of Applied Studies, NSDUH Series H–25, DHHS Publication No. SMA 04–3964). Rockville, MD: Substance Abuse and Mental Health Services Administration, 2004.
- Schensul JJ, Burkholder GJ. Vulnerability, social networks, sites, and selling as predictors of drug use among urban African American and Puerto Rican emerging adults. *J Drug Issues* 2005;35(2):379–407.
- Mulvey EP, Odgers C, Skeem J, Gardner W, Schubert C, Lidz C. Substance use and community violence: a test of the relation at the daily level. *J Consult Clin Psychol* 2006;74(4):743–54.
- Zun LS, Downey LV, Rosen J. Who are the young victims of violence? *Pediatr Emerg Care* 2005;21(9):568–73.
- Tucker JS, D'Amico EJ, Wenzel SL, Golinelli D, Elliott MN, Williamson S. A prospective study of risk and protective factors for substance use among impoverished women living in temporary shelter settings in Los Angeles County. *Drug Alcohol Depend* 2005;80(1):35–43.
- Markowitz S. Alcohol, drugs and violent crime. *Int Rev Law Econ* 2005;25(1):20–44.
- Friedman AS, Terras A, Glassman K. The differential disinhibition effect of marijuana use on delinquent behavior: a comparison of this effect on a conventional, non-delinquent group versus a delinquent or deviant group. *J Addict Dis* 2003;22(3):63–78.
- Harrison LD, Erickson PG, Adlaf E, Freeman C. The drugs-violence nexus among American and Canadian youth. *Subst Use Misuse* 2001;36(14):2065–86.
- Di Forti M, Morrison PD, Butt A, Murray RM. Cannabis use and psychiatric and cognitive disorders: the chicken or the egg? *Curr Opin Psychiatry* 2007;20(3):228–34.
- Esseiva P, Ioset S, Anglada F, Gaste L, Ribaux O, Margot P, et al. Forensic drug intelligence: an important tool in law enforcement. *Forensic Sci Int* 2007;3:247–54.
- Datwyler SL, Weiblen GD. Genetic variation in hemp and marijuana (*Cannabis sativa* L.) according to amplified fragment length polymorphisms. *J Forensic Sci* 2006;51(2):371–5.
- Hsieh HM, Hou RJ, Tsai LC, Wei CS, Liu SW, Huang LH, et al. A highly polymorphic STR locus in *Cannabis sativa*. *Forensic Sci Int* 2003;131(1):53–8.
- Gilmore S, Peakall R, Robertson J. Short tandem repeat (STR) DNA markers are hypervariable and informative in *Cannabis sativa*: implications for forensic investigations. *Forensic Sci Int* 2003;131(1):65–74.
- Stefanidou M, Dona A, Athanaselis S, Papoutsis I, Koutselinis A. The cannabinoid content of marijuana samples seized in Greece and its forensic application. *Forensic Sci Int* 1998;95(2):153–62.
- Ilias Y, Rudaz S, Mathieu P, Christen P, Veuthey JL. Extraction and analysis of different cannabis samples by headspace solid-phase microextraction combined with gas chromatography–mass spectrometry. *J Sep Sci* 2005;28(17):2293–300.
- Shibuya EK, Sarkis JES, Negrini-Neto O, Ometto JPHB. Multivariate classification based on chemical and stable isotopic profiles in sourcing the origin of marijuana samples seized in Brazil. *J Braz Chem Soc* 2007;18(1):205–14.
- Galimov EM, Sevastyanov VS, Kulbachevskaya EV, Golyavin AA. Isotope ratio mass spectrometry: delta C-13 and delta(15) N analysis for tracing the origin of illicit drugs. *Rapid Commun Mass Spectrom* 2005;19(10):1213–6.
- Denton TM, Schmidt S, Critchley C, Stewart GR. Natural abundance of stable carbon and nitrogen isotopes in *Cannabis sativa* reflects growth conditions. *Aust J Plant Physiol* 2001;28(10):1005–12.
- Brenneisen R, ElSohly MA. Chromatographic and spectroscopic profiles of cannabis of different origins: Part I. *J Forensic Sci* 1988;33(6):1385–404.
- Watling R. Sourcing the provenance of cannabis crops using inter-element association patterns “fingerprinting” and laser ablation inductively coupled plasma mass spectrometry. *J Anal At Spectrom* 1998;13(9):917–26.
- West JB, Bowen GJ, Cerling TE, Ehleringer JR. Stable isotopes as one of nature's ecological recorders. *Trends Ecol Evol* 2006;21(7):408.
- Shibuya EK, Sarkis JES, Negrini-Neto O, Martinelli LA. Carbon and nitrogen stable isotopes as indicative of geographical origin of marijuana samples seized in the city of Sao Paulo (Brazil). *Forensic Sci Int* 2007;167(1):8–15.

26. Shibuya EK, Sarkis JES, Neto ON, Moreira MZ, Victoria RL. Sourcing Brazilian marijuana by applying IRMS analysis to seized samples. *Forensic Sci Int* 2006;160(1):35–43.
27. Liu J, Lin W, Fitzgerald M, Saxena S, Shieh Y. Possible characterization of samples of *Cannabis sativa* L. by their carbon isotopic distributions. *J Forensic Sci* 1979;24:814–6.
28. West JB, Hurley JT, Ehleringer JR. The stable isotopic signatures of marijuana cultivation. I. Carbon and nitrogen stable isotopes describe the growth regime. *J Forensic Sci* 2009;54(1):84–9.
29. Reynolds AC, Betancourt JL, Quade J, Patchett PJ, Dean JS, Stein J.  $^{87}\text{Sr}/^{86}\text{Sr}$  sourcing of ponderosa pine used in Anasazi great house construction at Chaco Canyon, New Mexico. *J Archaeol Sci* 2005;32(7):1061–75.
30. Horn P, Schaaf P, Holbach B, Hölzl S, Eschnauer H.  $^{87}\text{Sr}/^{86}\text{Sr}$  from rock and soil into vine and wine. *Z Lebensm Unters Forsch* 1993;196(5):407–9.
31. Åberg G. The use of natural strontium isotopes as tracers in environmental studies. *Water Air Soil Pollut* 1995;79(1):309–22.
32. Kawasaki A, Oda H, Hirata T. Determination of strontium isotope ratio of brown rice for estimating its provenance. *Soil Sci Plant Nutr* 2002;48(5):635–40.
33. English NB, Betancourt JL, Dean JS, Quade J. Strontium isotopes reveal distant sources of architectural timber in Chaco Canyon, New Mexico. *Proc Natl Acad Sci USA* 2001;21:11891–6.
34. Juarez CA. Strontium and geolocation, the pathway to identification for deceased undocumented Mexican border-crossers: a preliminary report. *J Forensic Sci* 2008;53(1):46–9.
35. Bentley AR. Strontium isotopes from the Earth to the archaeological skeleton: a review. *J Archaeol Method Theory* 2006;13(3):135–87.
36. Beard BL, Johnson CM. Strontium isotope composition of skeletal material can determine the birth place and geographic mobility of humans and animals. *J Forensic Sci* 2000;45(5):1049–61.
37. Dijkstra FA, Van Breemen N, Jongmans AG, Davies GR, Likens GE. Calcium weathering in forested soils and the effect of different tree species. *Biogeochemistry* 2003;62(3):253–75.
38. Clow DW, Mast MA, Bullen TD, Turk JT. Strontium  $^{87}\text{Sr}/^{86}\text{Sr}$  as a tracer of mineral weathering reactions and calcium sources in an alpine/subalpine watershed, Loch Vale, Colorado. *Water Resour Res* 1997;33(6):1335–51.
39. Steiger RH, Jäger E. Subcommittee on geochronology: convention on the use of decay constants in geo- and cosmochronology. *Earth Planet Sci Lett* 1977;36(3):359–62.
40. Nebel O, Mezger K, Scherer EE, Patchett J. Recalibration of the Rb decay constant by age comparison against three U-Pb dated igneous rocks. *Geophys Res Abstr* 2006;8:08036.
41. Blum JD, Taliaferro EH, Weisse MT, Holmes RT. Changes in Sr/Ca, Ba/Ca and  $^{87}\text{Sr}/^{86}\text{Sr}$  ratios between trophic levels in two forest ecosystems in the northeastern U.S.A. *Biogeochemistry* 2000;49:87–101.
42. Vitoria L, Otero N, Soler A, Canals A. Fertilizer characterization: isotopic data (N, S, O, C, and Sr). *Environ Sci Technol* 2004;38(12):3254–62.
43. Pin C, Briot D, Bassin C, Poitras F. Concomitant separation of strontium and samarium-neodymium for isotopic analysis in silicate samples, based on specific extraction chromatography. *Anal Chim Acta* 1994;298(2):209–17.
44. Reed JC Jr, Wheeler JO, Tucholke BE. Geologic map of North America: perspectives and explanation. Boulder, CO: Geological Society of America, Decade of North American Geology, 2005.
45. Jacobson AD, Blum JD, Chamberlain CP, Poage MA, Sloan VF. Ca/Sr and Sr isotope systematics of a Himalayan glacial chronosequence: carbonate versus silicate weathering rates as a function of landscape surface age. *Geochim Cosmochim Acta* 2002;66(1):13–27.
46. Weary DJ. An Appalachian regional karst map and progress towards a new national karst map. Rapid City, SD: US Geological Survey Karst Interest Group Proceedings, 2005.
47. Veni G. Revising the karst map of the United States. *J Cave Karst Stud* 2002;64(1):45–50.
48. Price TD, Burton JH, Bentley RA. The characterization of biologically available strontium isotope ratios for the study of prehistoric migration. *Archaeometry* 2002;44(1):117–35.
49. Perakis SS, Maguire DA, Bullen TD, Cromack K, Waring RH, Boyle JR. Coupled nitrogen and calcium cycles in forests of the Oregon Coast Range. *Ecosystems* 2006;9:63–74.
50. Benson LV, Hattori EM, Taylor HE, Poulson SR, Jolie EA. Isotope sourcing of prehistoric willow and tule textiles recovered from western Great Basin rock shelters and caves: proof of concept. *J Archaeol Sci* 2006;33(11):1588–99.

## Appendix I

References for published  $^{87}\text{Sr}/^{86}\text{Sr}$  values for soils or rocks from within sample county-of-origin for Oregon and Tennessee for those sample counties with published data.

### Oregon

- Bacon CR, Gunn SH, Lanphere MA, Wooden JL. Multiple isotopic components in quaternary volcanic rocks of the Cascade Arc near Crater Lake, Oregon. *J Petrol* 1994;35:1521–56.
- Bacon CR, Bruggman PE, Christiansen RL, Clyne MA, Donnelly-Nolan JM, Hildreth W. Primitive magmas at five Cascade volcanic fields: melts from hot, heterogeneous sub-arc mantle. *Can Mineral* 1997;35:397–423.
- Barnes CG, Petersen SW, Kistler RW, Prestvik T, Sundvoll B. Tectonic implications of isotopic variation among Jurassic and Early Cretaceous plutons, Klamath Mountains. *Geol Soc Am Bull* 1992;104:117–26.
- Barnes CG, Petersen SW, Kistler RW, Murray R, Kays MA. Source and tectonic implications of tonalite-trondhjemite magmatism in the Klamath Mountains. *Contrib Mineral Petrol* 1996;123:40–60.
- Brandon AD, Goles GG. Assessing subcontinental lithospheric mantle sources for basalts: neogene volcanism in the Pacific Northwest, USA, as a test case. *Contrib Mineral and Petrol* 1995;121:364–79.
- Carlson RW. Isotopic constraints on Columbia River flood basalt genesis and the nature of subcontinental mantle. *Geochim Cosmochim Acta* 1984;48:2357–72.
- Carlson RW, Hart WK. Crustal genesis on the Oregon Plateau. *J Geophys Res* 1987;92(B7):6191–7206.
- Coleman RG. The Colebrooke Schist of southwestern Oregon and its relation to the tectonic evolution of the region. *U.S. Geological Survey Bulletin* 1972;1339.
- Conrey RM. Olivine analcimites in the Cascade Range of Oregon. *J Geophys Res* 1990;95(B12):19639–49.
- Goles GG, Lambert R. A strontium isotopic study of Newberry volcano, central Oregon: structural and thermal implications. *J Volcan Geotherm Res* 1990;43:159–74.
- Goles GG, Brandon AD, Lambert R. Miocene basalts of the Blue Mountains Province in Oregon: Part 2, Sr isotopic ratios and trace element features of little-known Miocene basalts of central and eastern Oregon. In: Reidel SP, Hooper PR, editors. *Volcanism and tectonism in the Columbia River Flood-Basalt Province*. Geological Society of America Special Paper 239. Boulder, CO: Geological Society of America, 1989:357–66.
- Gribble RF, Barnes CG, Donato MM, Hoover JD, Kistler RW. Geochemistry and intrusive history of the Ashland pluton, Klamath Mountains, California and Oregon. *J Petrol* 1990;31:883–923.
- Hart WK, Carlson RW, Mosher SA. Petrogenesis of the Pueblo Mountain basalt, southeastern Oregon and northern Nevada. In: Reidel SP, Hooper PR, editors. *Volcanism and tectonism in the Columbia River Flood-Basalt Province*, Geological Society of America Special Paper 239. Boulder, CO: Geological Society of America, 1989:367–78.
- Hedge CE, Hildreth RA, Henderson WT. Strontium isotopes in some Cenozoic lavas from Oregon and Washington. *Earth Planet Sci Lett* 1970;8:434–8.
- Heller PL, Peterman ZE, O'Neil JR, Shafiqullah M. Isotopic provenance of sandstones from the Eocene Tyee Formation, Oregon Coast Range. *Geol Soc Am Bull* 1985;96:770–80.
- Hooper PR, Swanson DA. The Columbia River Basalt Group and associated volcanic rocks of the Blue Mountains Province. In: Walker GW, editor. *Geology of the Blue Mountains Region of Oregon, Idaho and Washington: Cenozoic geology of the Blue Mountains Region*. U.S. Geological Survey Professional Paper 1437. Reston, VA: US Geological Survey, 1989:63–99.
- Leeman WP. Tectonic and magmatic significance of strontium isotopic variations in Cenozoic volcanic rocks from the western United States. *Geol Soc Am Bull* 1982;93:487–503.
- McBirney AR. Volcanic evolution of the Cascade Range. *Ann Rev Earth Planet Sci* 1978;6:437–56.
- McDougall I. Geochemistry and origin of basalt of the Columbia River Group, Oregon and Washington. *Geol Soc Am Bull* 1976;87:777–92.
- Nelson BK. Fluid flow in subduction zones: evidence from Nd- and Sr-isotope variations in metabasalts of the Franciscan Complex, California. *Contrib Mineral Petrol* 1995;119:247–62.
- Obermiller WA. Geologic, structural, and geochemical features of basaltic and rhyolitic volcanic rocks of the Smith Rock/Gray Butte area, central Oregon [thesis]. Eugene (OR): University of Oregon, 1987.



Perakis SS, Maguire DA, Bullen TD, Cromack K, Waring RH, Boyle JR. Coupled nitrogen and calcium cycles in forests of the Oregon Coast Range. *Ecosyst* 2006;9:63–74.

Peterman ZE, Whetten JT.  $^{87}\text{Sr}/^{86}\text{Sr}$  variation in Columbia River bottom sediments as a function of provenance. *Geol Soc Am Mem* 1972;135:29–36.

Peterman ZE, Hedge CE, Coleman RG, Snavely PD, Jr.  $^{87}\text{Sr}/^{86}\text{Sr}$  ratios in some eugeosynclinal sedimentary rocks and their bearing on the origin of granitic magma in orogenic belts. *Earth Planet Sci Lett* 1967;2:433–9.

Peterman ZE, Coleman RG, Bunker CM. Provenance of Eocene gray-wackes of the Flournoy Formation near Agness, Oregon: a geochemical approach. *Geology* 1981;9:81–6.

### Tennessee

Barbieri M, Masi V. Strontium geochemistry of barite from two lower Paleozoic deposits from Tennessee and Nevada (USA). *Mineral Petrograph Acta* 1983;27:251–4.

Corgan JX, Bradley MW. Radiometric ages of Tennessee rocks. *Tennessee Division of Geology Bulletin* 1983; No. 82.

Denison RE, Koepnick RB, Burke WH, Hetherington EA. Construction of the Cambrian and Ordovician seawater  $^{87}\text{Sr}/^{86}\text{Sr}$  curve. *Chem Geol* 1998;152(3–4):325–40.

Fullagar PD, Bottino ML. Sulfide mineralization and rubidium–strontium geochronology at Ore Knob, North Carolina, and Ducktown, Tennessee. *Econ Geol* 1970;65(5):541–50.

Fullagar PD, Odom AL. Geochronology of Precambrian gneisses in the Blue Ridge province of northwestern North Carolina and in adjacent parts of Virginia and Tennessee. *Geol Soc Am Bull* 1973;84:3065–80.

Goldberg SA, Butler JR, Fullagar PD. The Bakersville dike swarm: geochronology and petrogenesis of Late Proterozoic basaltic magmatism in the southern Appalachian Blue Ridge. *Am J Sci* 1986;286:403–30.

Grant NK, Bliss MC. Strontium isotope and rare earth element variations in nonsulphide minerals from the Elmwood-Gordonsville mines, central Tennessee. In: Kisvarsányi G, Grant SK, Pratt WP, Koenig JW, editors. 2<sup>nd</sup> International Conference on Mississippi Valley Type Lead–Zinc Deposits. Rolla (MO): University of Missouri, 1982:206–10.

Hardeman WD, Miller RA, Swingle GD. Geologic map of Tennessee. Knoxville (TN): Tennessee Division of Geology, 1966.

Kesler SE, Jones LM, Ruiz J. Strontium isotopic geochemistry of Mississippi Valley-type deposits, East Tennessee; implications for age and source of mineralizing brines. *Geol Soc Am Bull* 1988;100(8):1300–7.

Kessen KM, Woodruff MS, Grant NK. Gangue mineral  $^{87}\text{Sr}/^{86}\text{Sr}$  ratios and the origin of Mississippi Valley-type mineralization. *Econ Geol* 1981;76(4):913–20.

Koepnick RB, Burke WH, Denison RE, Hetherington EA, Nelson HF, Otto JB, Waite LE. Construction of the seawater  $^{87}\text{Sr}/^{86}\text{Sr}$  curve for the Cenozoic and Cretaceous: supporting data. *Chem Geol* 1985;58:55–81.

McArthur JM, Kennedy WJ, Gale AS, Thirlwall MF, Chen M, Burnett J, Hancock, JM. Strontium isotope stratigraphy in the Late Cretaceous: intercontinental correlation of the Campanian/Maastrichtian boundary. *Terra Nova* 1992;4(3):385–93.

Monrad JR, Gulley GL, Jr. Age and P-T conditions during metamorphism of granulite-facies gneisses, Roan Mountain, North Carolina—Tennessee. In: Lewis SE, editor. Geologic investigations in the Blue Ridge of northwestern North Carolina, Carolina Geological Society Guidebook. Durham: North Carolina Division of Land Resources, 1983 (Article 4:1–18).

Nakai S, Halliday AN, Kesler SE, Jones HD. Rb–Sr dating of sphalerites from Tennessee and the genesis of Mississippi Valley type ore deposits. *Nature* 1990;346:354–7.

Nakai S, Halliday AN, Kesler SE, Jones HD, Kyle JR, Lane TE. Rb–Sr dating of sphalerites from Mississippi Valley-type ore deposits. *Geochim Cosmochim Acta* 1993;57:417–27.

Odom AL, Fullagar PD. Rb–Sr whole-rock and inherited zircon ages of the plutonic suite of the Crossnore Complex, southern Appalachians, and their implications regarding the time of opening of the Iapetus Ocean. *Geological Society of America Special Paper*, 1984;194:255–61.

Qing H, Barnes CR, Buhl D, Veizer J. The strontium isotopic composition of Ordovician and Silurian brachiopods and conodonts; relationships to geological events and implications for coeval seawater. *Geochim Cosmochim Acta* 1998;62(10):1721–33.

Ruppel SC, James EW, Barrick JE, Nowlan G, Uyeno TT. High resolution  $^{87}\text{Sr}/^{86}\text{Sr}$  chemostratigraphy of the Silurian: implications for event correlation and strontium flux. *Geology* 1996;24(9):831–4.

Schedl A, McCabe C, Montañez IP, Fullagar PD, Valley JW. Alleghanian regional diagenesis: a response to the migration of modified metamorphic fluids derived from beneath the Blue Ridge-Piedmont thrust sheet. *J Geol* 1992;100:339–52.

Sloan J, Henry CD, Hopkins M, Ludington S. National Geochronological Database. US Geological Survey 2003; Open File Report 03-236 (<http://geopubs.wr.usgs.gov/open-file/of03-236/>). Accessed August 24, 2009.

### Additional information and reprint requests:

Jason B. West, Ph.D.

Texas AgriLife Research

Department of Ecosystem Science & Management

Texas A&M University

1619 Garner Field Road

Uvalde, TX 78801

Email: jbwest@tamu.edu